



Walk 82. Bampton and Morebath.

- 8 miles, ascents and descents of 350 metres. 3 hours 5 minutes constant walking, allow 4 hours.

Terrain: Paths, tracks and fields, short sections of road. Some potentially very muddy patches.

Access: By car, park in Bampton (there are two car parks, a small one by the river at SS 959 222, near EX16 9LX, and a larger one off Station Road, SS 956 222, EX16 9QJ). By bus, route 25 (Taunton to Dulverton) stops opposite the war memorial near the larger car park, and 398 (Tiverton to Dulverton) in Brook Street; buses run Monday to Saturday.

Map: OS Explorer 114 Exeter and the Exe Valley.

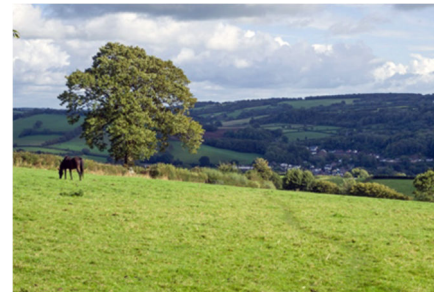
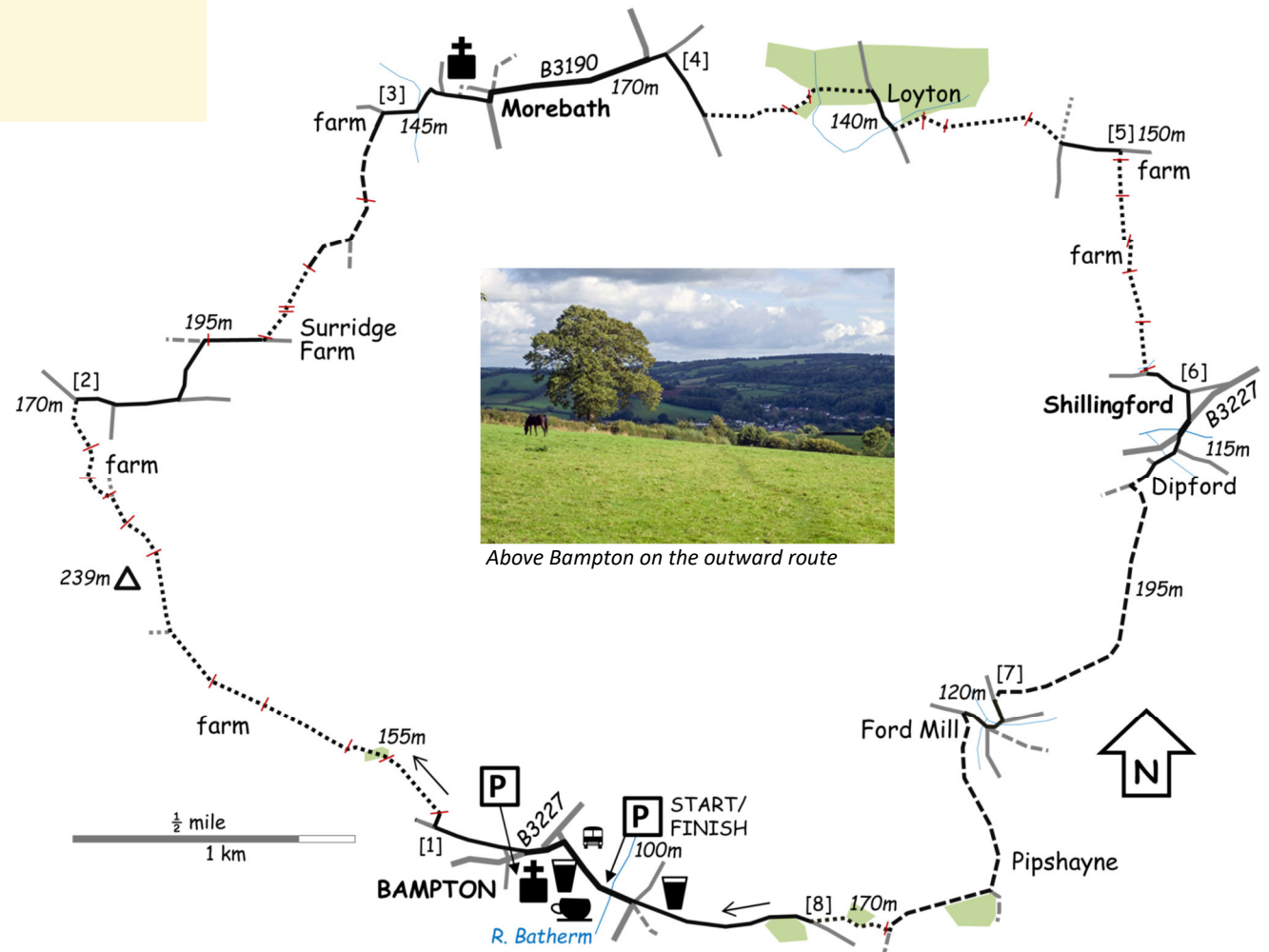
Refreshments: Several options in Bampton.

THIS NORTHERN CIRCUIT FROM BAMPTON makes for a moderate, undulating walk, though there is a steady climb out of Bampton at the beginning and another up from Shillingford towards the end. As with walks 83 and 84 this is an area of rolling country that is largely off the beaten track. It features views across to the Exe Valley on the outward stretch, the little-visited settlements of Morebath and Loyton, and nearly two miles of (almost) traffic-free green lanes towards the end. The walk begins by reversing the final stretch of walk 70, while the return from Ford Mill is shared with walk 84.

Starting from the riverside car park in Bampton, walk away from the river and at the end of the street turn left. Pass the telephone box and head uphill, forking right through no entry signs to join a narrow road signposted to Dulverton 'for light cars only'. Continue uphill, then after you have left the houses behind turn right on a driveway for Grey Gables and two other houses, marked as the Exe Valley Way (11mins, [1]). Turn diagonally left through a field gate and walk along the right-hand edge of the field. Go over a stile and turn left on a farm track; when the track bends right, head left to the corner of the field. Go over two stiles and through a kissing gate in quick succession, then follow the markers along the right-hand boundary to a pedestrian gate. Walk diagonally across the next field to go through another pedestrian gate in the far corner. Now head slightly to the right to the corner of the field as signposted, go through a gap into the next field, turning first left

then right on the signposted Exe Valley Way (the path to the left returns to the Bampton-Dulverton road). Go through a kissing gate and continue ahead towards a farm. From the next gate the path is clearly signposted to bypass the farm on its left-hand side. Leaving the farm along the side of a field you will have views over Exebridge to your left. Follow the path beneath power lines and arrive at a road (45mins, [2]).

Turn right, then in under five minutes come to a house on the right; turn left here into the driveway for Surridge Farm, heading back under the power lines. The drive bends right through a gate. Follow it to a bungalow, then turn left immediately after through a pedestrian gate and cross the field diagonally to another gate in the far corner. Go through it, and through the field gate opposite; this area can be churned up by cows. Keep to the right-hand field edge, and go through a gate ahead of you to join a grassy lane. Turn left when you come to a wider track, and follow it through a gate and past a farm, keeping right. When you



Above Bampton on the outward route

come to a road (1hr10mins, [3]), turn right and head down to a stream then up again to Morebath. A road soon comes in from the left; just after, turn left into the churchyard. Leave through the gate on the right to go through the older part of the village. When the lane meets a larger road, bear left. Within ten minutes you will come to a junction at a bend; take the road ahead towards Claypits and Loyton. In less than a minute turn right on a narrow road (1hr25mins, [4]). Some distance before a large barn turn left on a signposted footpath, keeping the field boundary on your left. After about five minutes come to a wooded area and go through a field gate on your left. Keep right and go through another gate; head slightly left and downwards to cross a small bridge over a stream. Continue ahead on a grassy track. Arriving at a road, turn right; this brings you into the hamlet of Loyton.

Immediately after the last house, turn left over a stile to join a footpath by a stream. Keep to the left of a barn and walk roughly parallel with the stream, then go through a gate, cross the field to about the middle of its far side, and go over a stile. Keep to the left-hand side of the next field, then go over a stile and bear a little to the right to cross the field to a kissing gate. This opens to a road at a sharp bend; bear left, then in about three minutes turn right on a signposted footpath through double gates immediately before a farm building (1hr50mins, [5]). Cross a paddock, go through a field gate, continue ahead next to the hedge, through another gate, then head for the left-hand end of the farm buildings. Go through a field gate then immediately left through a kissing gate. Walk just to the right of the pylon, go over a double stile, then head to the far left-hand corner of the field. Go through a gate and walk towards a modern house; cross a stream and a stile, then turn left on the road (2hr5mins, [6]). Take the first road right just as you are about to come into Shillingford, and walk down to a converted chapel at a main road (the B3227).

Turn right on the road to go over a bridge, then straight away turn left at the Old Mill. A thatched cottage is in front of you; turn right here and then bear left through a farm, heading uphill on a lane. A minute or so from the farm, turn sharply left on a signposted bridleway. After bending around to the right this heads uphill and then down, arriving after three-quarters of a mile at a surfaced road at the little hamlet of Ford (2hr30mins, [7]). Turn left on the road, then keep right past a white house and turn right on the road to Bampton ('unsuitable for long vehicles'). Turn left on a wide track behind a stone and brick house, Ford Mill. Pass above a farm on the left, then follow the track right where it is signposted as a footpath. Pass an isolated house (currently boarded up), follow the track around to the left, then take the footpath to the right, following the right-hand field boundary. Turn right on meeting the road (2hr55mins, [8]) and return into Bampton.

© Stan Lester 2018-21. Last recce 3/2021. Please email editor@exmoorwalker.uk with any updates or comments.

This route description is provided freely and in good faith. You are welcome to use, copy and distribute it for personal and non-profit purposes (attribution—non-commercial—no derivatives). No responsibility is taken for any errors or omissions, or for your navigation or safety on the walk. Introductory and safety information at exmoorwalker.uk.